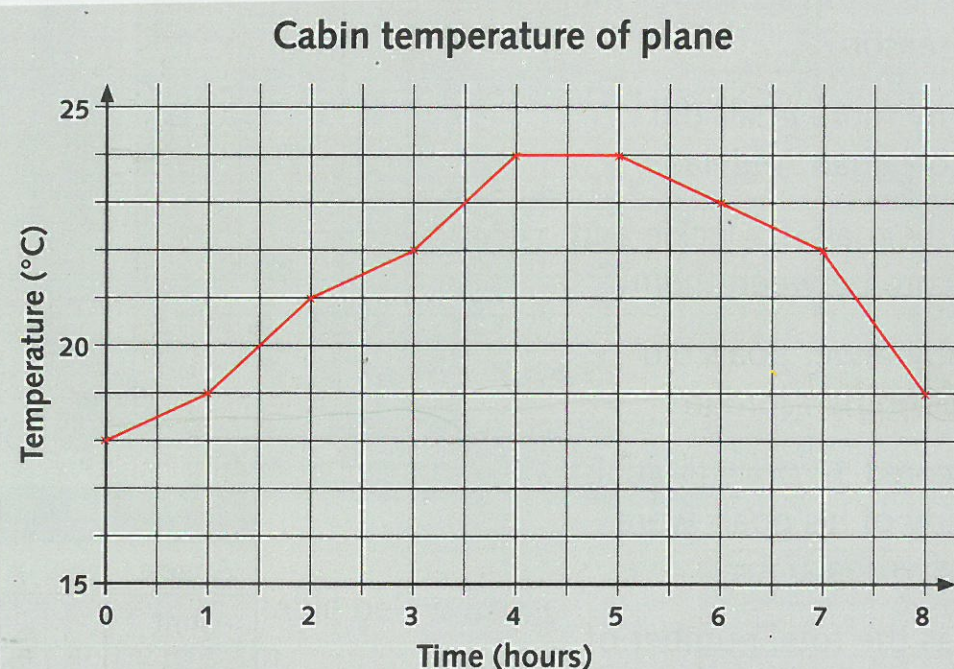


# Holiday in Orlando

Solve problems using data presented in simple time graphs

The Barclay family flew from London and landed at Tampa Airport in Florida. The flight took 8 hours. The graph shows the temperature in the cabin of the plane during their flight.



- What was the temperature in the cabin of the plane when:
  - it took off from London?
  - it landed at Tampa?
- What was the temperature in the cabin:
  - at 2 hours into the flight?
  - at 7 hours into the flight?
- Between which 2 hours was the temperature in the cabin at its warmest?
- By how many degrees Celsius did the temperature in the cabin drop between the 7th and the 8th hour of the flight?
- What was the approximate temperature in the cabin at  $3\frac{1}{2}$  hours into the flight?

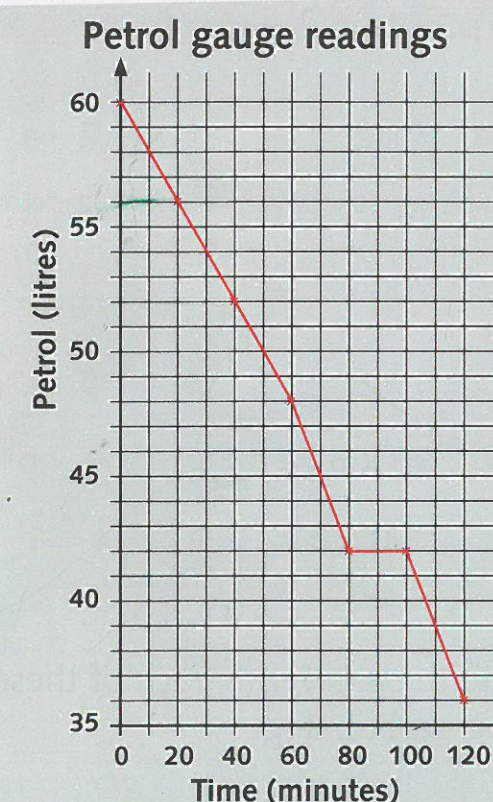


### Challenge 2

At Tampa Airport, Mrs Barclay collected their hire car. The petrol gauge showed it had a full tank at 60 litres. The graph shows how much petrol was used on the 2-hour journey by car from Tampa to Orlando.

- Copy and complete the table.
- How many litres did the petrol gauge show:
  - at the end of 1 hour?
  - at the end of 2 hours?

Time (minutes)	Petrol (litres)
0	60
20	
40	
60	
80	
100	
120	



- How many litres of petrol were used for the journey?
- How many minutes into the journey did the Barclays make a short stop for refreshments?

### Challenge 3

- The graph shows the temperature in Orlando for each day of their holiday. Between which two days did the temperature:
  - rise by  $2^{\circ}\text{C}$ ?
  - fall by  $2^{\circ}\text{C}$ ?
- Describe how the temperature changed between Thursday and Saturday.

